

♩ = 79 bpm

21 Guns

Green Day

intro 4 bar guitar intro

4/4 time signature. A 4-measure guitar intro consisting of a whole rest, a half note, a whole rest, and a half note. A '2' is written above the second measure, and a fermata is placed over the final half note.

Verse

Vocals and acoustic guitar only first time - No drums

Verse guitar notation. A 4-measure phrase with a repeat sign and a double bar line. The notation includes a series of 'x' marks above the staff and a melodic line below. It is followed by a 'repeat 8X' instruction.

Drums enter

Drum notation for the verse. It starts with 'CHH' and a 4-measure phrase with a repeat sign and a double bar line. This is followed by a 'repeat 6X' instruction and a 4-measure phrase with a crash symbol and a melodic line.

Chorus

Chorus notation. It features two staves of guitar with 'CHH' and 'Crash' markings. The first staff has a 4-measure phrase with a repeat sign and a double bar line, followed by a 4-measure phrase with a crash and a melodic line. The second staff has a similar structure. Below these is a 4-measure phrase with a first ending (1.) and a second ending (2.) leading to a melodic line.

Bridge

loose HH

Bridge notation. It starts with a 4-measure phrase with a repeat sign and a double bar line, followed by a 'repeat 6X' instruction. The notation includes 'loose HH' and a melodic line.

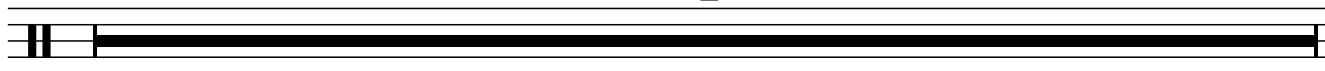
Guitar Solo

Guitar solo notation. It features a 4-measure phrase with a repeat sign and a double bar line, followed by a 'repeat 8X' instruction. The notation includes a melodic line and a series of 'x' marks above the staff.

2 **intro**

4 bar guitar intro

4

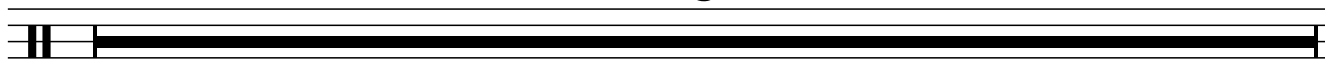


Verse

Vocals and acoustic guitar only

8

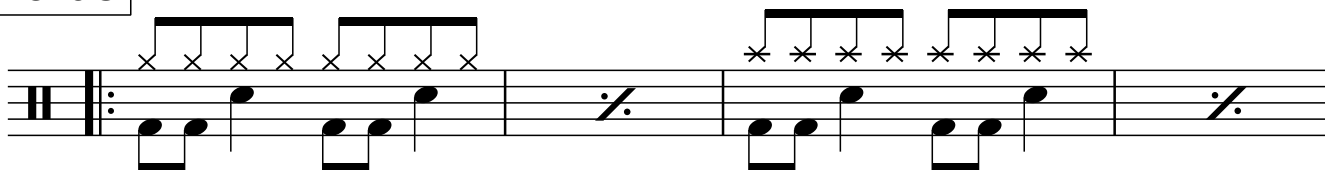
your in ruins...



Chorus

CHH

Crash



CHH

Crash

