

# Double Bass Drum with 4 Way Co-ordination

1

2

3

4

Detailed description of the musical exercises: The page contains four numbered exercises for double bass drum. Each exercise is presented on two staves: the top staff for the Right Hand (RH) and the bottom staff for the Left Foot (LF). Exercise 1 consists of two staves. The top staff has notes on the first and third lines, with rests on the second and fourth lines. The bottom staff has notes on the first and second lines, with rests on the third and fourth lines. Exercise 2 also consists of two staves. The top staff has notes on the first and third lines, with rests on the second and fourth lines. The bottom staff has notes on the first and second lines, with rests on the third and fourth lines. Exercise 3 consists of two staves. The top staff has notes on the first and third lines, with rests on the second and fourth lines. The bottom staff has notes on the first and second lines, with rests on the third and fourth lines. Exercise 4 consists of two staves. The top staff has notes on the first and third lines, with rests on the second and fourth lines. The bottom staff has notes on the first and second lines, with rests on the third and fourth lines. The exercises are designed to improve coordination between the right hand and left foot.

5

Handwritten musical notation for exercise 5, consisting of four systems. Each system includes a right-hand (RH) and left-hand (LH) staff. The RH staff contains rhythmic markings (vertical lines with 'x' marks) and a series of notes. The LH staff contains notes with fingering numbers '5' written below them. Labels 'RH', 'RF', 'LH', and 'LF' are placed at the beginning of their respective staves. The exercise is divided into two measures by a double bar line.

6

Handwritten musical notation for exercise 6, consisting of four systems. Each system includes a right-hand (RH) and left-hand (LH) staff. The RH staff contains rhythmic markings and notes. The LH staff contains notes with fingering numbers '6' written below them. Labels 'RH', 'RF', 'LH', and 'LF' are placed at the beginning of their respective staves. The exercise is divided into two measures by a double bar line.

7

Handwritten musical notation for exercise 7, consisting of two systems. Each system includes a right-hand (RH) and left-hand (LH) staff. The RH staff contains rhythmic markings and notes. The LH staff contains notes with fingering numbers '7' written below them. Labels 'RH', 'RF', 'LH', and 'LF' are placed at the beginning of their respective staves. The exercise is divided into two measures by a double bar line.

2

8

The image displays a musical score for a 12-string guitar, organized into six systems of staves. Each system contains four staves: RH (Right Hand), RF (Right Finger), LH (Left Hand), and LF (Left Finger). The notation includes rhythmic markings, fingerings (numbers 1-7), and dynamic markings. The score is divided into two main sections by a double bar line. The first section consists of four measures, and the second section also consists of four measures. The RH and RF parts play a sequence of chords, while the LH and LF parts play a melodic line. The LF part is marked with 'RF' at the end of the second section. The score is marked with a '7' in the first measure of each system, indicating a specific fingering or technique.



6

Musical score for exercise 6, consisting of five systems. Each system contains two staves: the top staff is for the Right Hand (RH) and the bottom staff is for the Left Hand (LH). The exercises are as follows:

- System 1: RH and LH play a continuous eighth-note pattern with a fingering of 5. The RH staff is labeled 'RF' and the LH staff is labeled 'LF'.
- System 2: RH and LH play a continuous eighth-note pattern with a fingering of 5. The RH staff is labeled 'RF' and the LH staff is labeled 'LH'.
- System 3: RH and LH play a continuous eighth-note pattern with a fingering of 5. The RH staff is labeled 'RF' and the LH staff is labeled 'LH'.
- System 4: RH and LH play a continuous eighth-note pattern with a fingering of 6. The RH staff is labeled 'RF' and the LH staff is labeled 'LF'.
- System 5: RH and LH play a continuous eighth-note pattern with a fingering of 6. The RH staff is labeled 'RF' and the LH staff is labeled 'LH'.

7

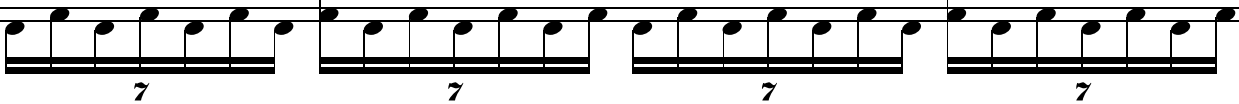
Musical score for exercise 7, consisting of five systems. Each system contains two staves: the top staff is for the Right Hand (RH) and the bottom staff is for the Left Hand (LH). The exercises are as follows:

- System 1: RH and LH play a continuous eighth-note pattern with a fingering of 6. The RH staff is labeled 'RF' and the LH staff is labeled 'LF'.
- System 2: RH and LH play a continuous eighth-note pattern with a fingering of 6. The RH staff is labeled 'RF' and the LH staff is labeled 'LH'.
- System 3: RH and LH play a continuous eighth-note pattern with a fingering of 6. The RH staff is labeled 'RF' and the LH staff is labeled 'LH'.
- System 4: RH and LH play a continuous eighth-note pattern with a fingering of 7. The RH staff is labeled 'RF' and the LH staff is labeled 'LF'.
- System 5: RH and LH play a continuous eighth-note pattern with a fingering of 7. The RH staff is labeled 'RF' and the LH staff is labeled 'LH'.

RH



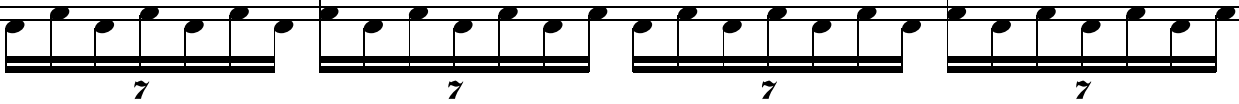
LF



LH



LF

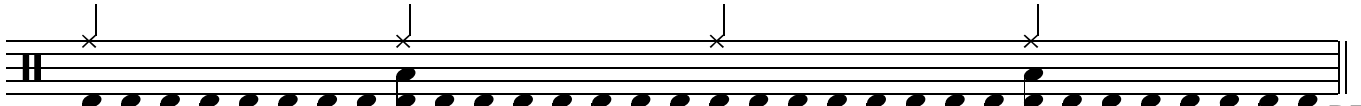
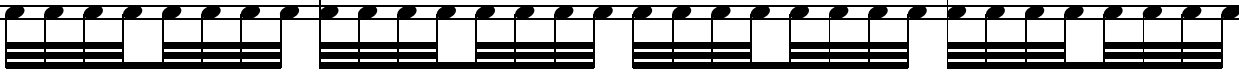


8

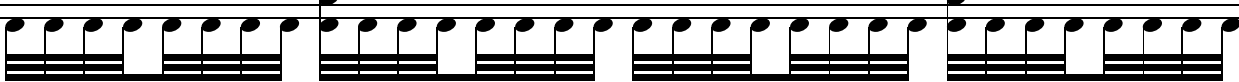
RH



RF



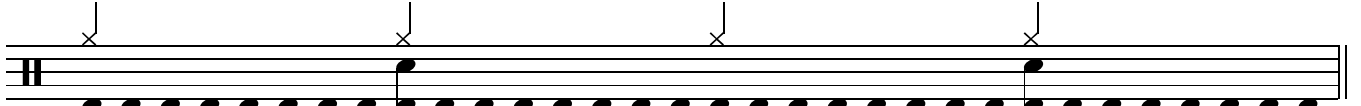
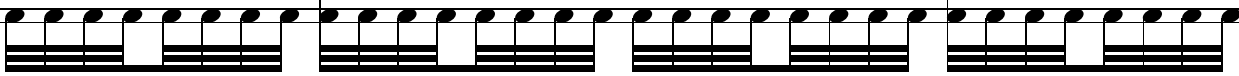
LF



LH



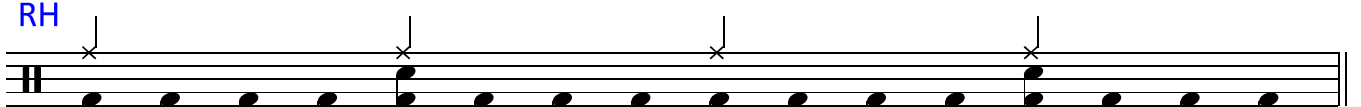
RF



LF



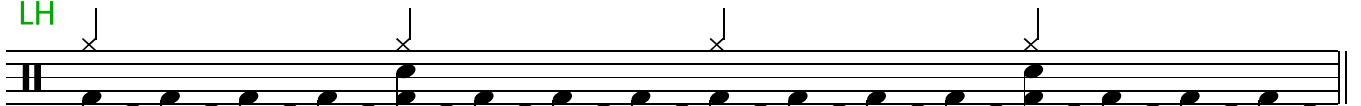
RH



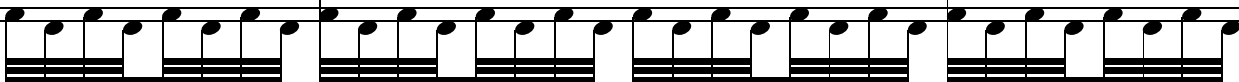
RF



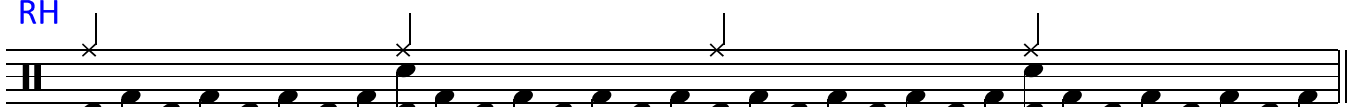
LH



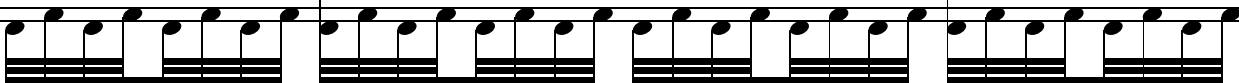
RF



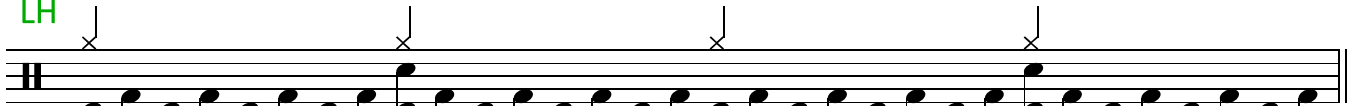
RH



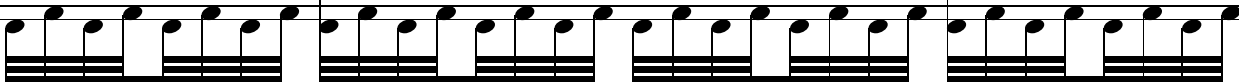
LF



LH



LF



RF