

Man in Black

Rob Leytham

Beats

Walking Feet

Bar 18 riding on the floor tom

Musical notation for Bar 18. It shows a 4/4 time signature. The top staff has a series of eighth notes with 'x' marks above them, indicating a floor tom pattern. The bottom staff has a bass line with eighth notes and rests.

Walking Feet adding the back beat on the Snare

Bar 22

Musical notation for Bar 22. Similar to Bar 18, but the bottom staff now includes a snare drum backbeat on the second and fourth beats.

Walking Feet adding SD on 1e

Bar 24

Musical notation for Bar 24. The snare drum (SD) is added on the first half-beat (1e) of the second and fourth beats, marked with an accent (>).

With off beat BD

Musical notation for the continuation of Bar 24. The bass drum (BD) is added on the off-beats (the 'e' of 1 and 3), marked with an accent (>).

Adding Double SD

Bar 26

Musical notation for Bar 26. The snare drum (SD) is added in doublets on the first half-beat of the second and fourth beats, marked with an accent (>).

Adding SD on the 'a' of 4

Musical notation for the continuation of Bar 26. The snare drum (SD) is added on the 'a' of the fourth beat, marked with an accent (>).

Placing rhythm on toms

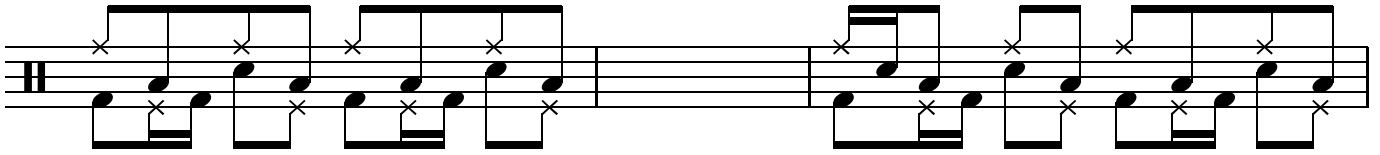
Bar 28

Musical notation for Bar 28. The snare drum (SD) is added on the 'a' of the fourth beat, marked with an accent (>). The bass drum (BD) is added on the off-beats (the 'e' of 1 and 3), marked with an accent (>).

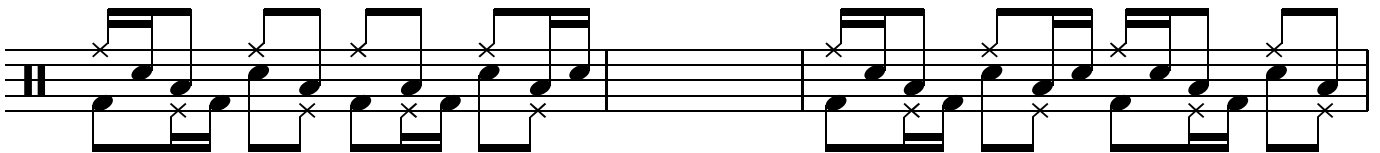
Section B

Moving the RH between ride and floor tom

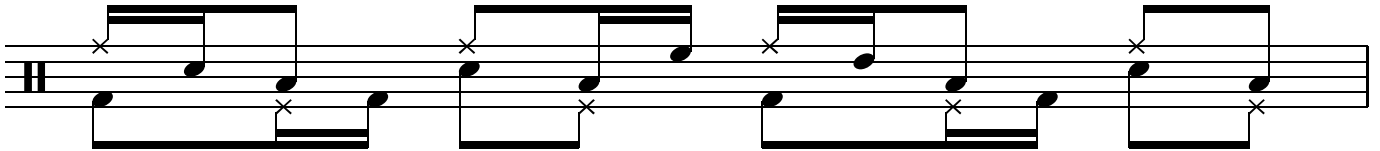
Bar 32 Adding the SD on 1e



Adding the SD on 1e and the 'a' of 4



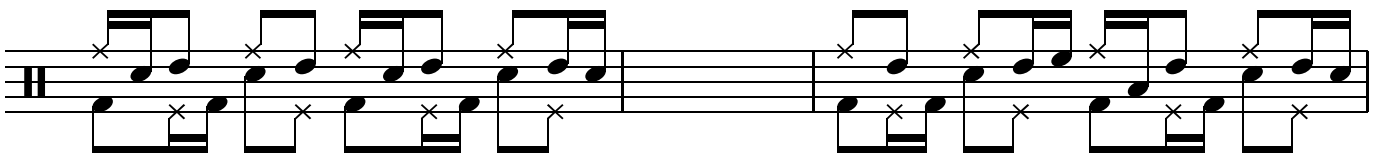
Bar 34



Section D

Bar 45 Adding the Middle Tom on the '+'

Bar 46



Bar 47

